



Comune di
Casalecchio
di Reno



Discovering

Casalecchio di Reno

the places, the stories, the itineraries

Located on the outskirts of Bologna, Casalecchio di Reno is among the most populous municipalities in the metropolitan area.

A “small cluster of houses” – a translation of the Latin name *Casaliculum* – perfectly nestled between the plain and the hills of the Bolognese Apennines, as well as a meeting point of countless waterways, starting with the Reno river and the dense network of canals fed by the *Chiusa di Casalecchio* (Dam).



Its strategic location on various paths - from the *Via degli Dei* to the *Via dei Brentatori*, and the *Via della Lana e della Seta* - has allowed, particularly slow tourism enthusiasts, to discover and love this area, so rich in history, art, landscapes, and protected natural habitats, making it a true gem.

With this booklet, we invite you to (re) discover the many faces of Casalecchio di Reno, starting with the most significant and representative places in the area.

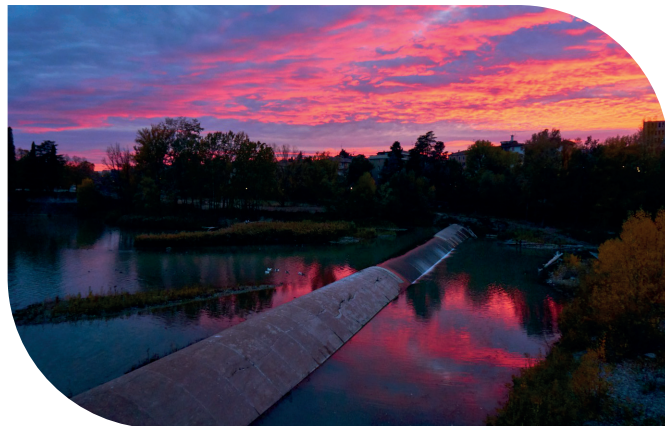
Chiusa di Casalecchio and Casa dei Ghiacci

THE IMPOSING HYDRAULIC WORK, built in the mid-14th century at the end of the natural course of the Reno river, is among the oldest still functioning in Europe.

It gave rise to an advanced network of canals that, from the 14th to the 18th centuries, powered the silk mills and transported goods by water, making Bologna a wealthy, advanced, and peaceful city. In 2010, UNESCO declared the Chiusa a “Heritage Messenger of a Culture of Peace for Young People.”

The work, which is now seven centuries old, consists of a bastion that slows the tumultuous waters and partially directs them into the Reno Canal.

The hydraulic system continues with the various spillways, structures that are still functioning today and prevent the various materials transported by the water from settling.



Among these we find the *Paraporti Verrocchio* and *San Luca*, restored in 2009, and the *Paraporto Scaletta*, known as the *Casa dei Ghiacci* (“House of Ice”) because of the slabs that were intercepted by a special mechanism in the winter, preventing blockages to the city’s mills.

At *Croce di Casalecchio*, the so-called “*Filanda*” was founded and developed between 1800 and 1900, purchased in 1906 by the “*Linificio-Canapificio Nazionale*”. The natural 5.4-meter drop in water, exploited for industrial production until the 1990s, gave rise, thanks to the partnership between Consorzio della Chiusa and Sime Energia Srl, to the current hydroelectric plant which develops a power of 630 kW.





Parco della Chiusa

THE PARCO DELLA CHIUSA, known as Talon Park, is a place of great beauty and environmental quality, with its 110 hectares extending along the right bank of the Reno river and the wide variety of different habitats. It is an important ecological corridor for many animal species that inhabit it or frequent it during migration. For this reason, from 2006 the Park was included in the SIC, Site of Community Importance - ZPS, Special Protection Area “*Boschi di San Luca* and right bank of the Reno”, while since 2014 it has been part of the protected landscape “*Colline di San Luca*”.

The park is also a historical and architectural gem: it encompasses five farmhouses (including *Casa Santa Margherita*, which houses the *Parco della Chiusa* Agritourism, *Montagnola di Mezzo*, now a hospitality facility, and *Montagnola di Sopra*, with rooms for workshops and events) and three villas (including *Villa Ada*, the subject of a major redevelopment project thanks to PNRR funding). The *Casa per l'Ambiente*, at the park entrance, is a meeting point for activities and guided tours.

Since 2019, the management of the *Parco della Chiusa* and all the city's green areas has been entrusted to the “*La Chiusa*” group, led by the COpAPS cooperative, which deals with the cultivation of the land, the maintenance of the greenery, the agritourism reception and the educational activities.

Parco del Lido

IL LIDO DI CASALECCHIO began as a summer destination for cooling off on the banks of the Reno river. In the 1930s, the Association of Mutilated and Invalids of the Great War took over its management, building changing rooms, bars, showers, and restrooms and regulating admission: 5 soldi (25 cents) for those from the city, free for Casalecchio residents. In 1932, ticket office reports reported 10,000 visitors, with peaks of 20,000 during the week of *Ferragosto*.

The Second World War drove people away from the *Lido* for years, but in 1946 the *Lido* reopened its doors and the *Isola Verde*, a dance club that remained in operation until 1952, also appeared. However, the flood of November 4, 1966, destroyed everything. In 1998 the Municipality of Casalecchio di Reno restored the *Lido*, which is now managed by a private company (*Chiosco del Lido*) which offers a bar, sunbeds and a beach volleyball court.

The *Parco del Lido* also features the *Casa delle Acque*, home for the association of the same name, which hosts events, shows, and summer festivals.





Casa museo Nena

IN 2021 the Nina Onlus cultural association launched a project to transform one of the most fascinating historic homes in the Bologna hinterland into a museum: *Villa Boschi-Rivani-Garagnani*, now open to the public as the *Casa Museo Nena*. Frequented by several noble families, *Casa Museo Nena* preserves the historical and artistic heritage of the generations who lived there from the 17th to the 20th century.

The elements that characterize the residence's rooms - furnishings, crystal and ceramic sets, collections of prints and paintings, and 19th-century frescoes - provide traces of a fascinating past. The building, surrounded by a large park, is also embellished with a chapel dedicated to the Sacred Heart of Jesus and a small Italian garden, once used for growing medicinal and officinal herbs. Dedicated to Maria Maddalena Garavini, the last descendant of the noble branch affectionately nicknamed "Nena", the *Casa Museo Nena* and its park are open to the public through guided tours, activities, meetings, and themed events.

Eremo di Tizzano

THE EREMO DI TIZZANO (Shrine of the Holy Crucifix in the Parish of Saints John the Baptist and Benedict of Tizzano) is one of the most evocative places in the area. After a couple of kilometers of climbing, you can enjoy a splendid view of the entire Bologna plain.

The monastic complex of the Hermitage was built by the Camaldolese monks between 1665 and 1741. Inside the Bolognese Baroque-style church, unfortunately not currently open to visitors, is a 16th-century olive wood crucifix, at the base of which lies a reliquary believed to contain fragments of the True Cross, and the altar dedicated to Blessed Lucia da Settefonti, as well as paintings attributed to Gaetano Gandolfi and Guercino.

In the adjacent park you can access a secondary church, while at the back you can see the remains of two of the 17 cells where the monks lived. The Hermitage is one of the stages of the *Via dei Brentatori*: 44 km used by the ancient corporation in the 12th century to transport the wine, which connects the center of Bologna to the Bentivoglio Fortress in Bazzano.



Learn more

Visit the Casalecchio di Reno Municipality website:
www.comune.casalecchiodireno.bo.it/argomenti/turismo

Scan the QR code to access from your smartphone



Chiusa di Casalecchio

WHERE:

Via Porrettana, 187 - Casalecchio di Reno

REFERENCES:

canalidibologna.it - 051 6493527
prenotazioni@canalidibologna.it

Parco della Chiusa

WHERE:

Via Panoramica - Casalecchio di Reno

REFERENCES:

parcodellachiusa.it - 051 598273
ambiente@comune.casalecchio.bo.it
agriturismoparcodellachiusa.it - 348 5252452
info@agriturismoparcodellachiusa.it

Lido di Casalecchio

WHERE:

Via Lido - Casalecchio di Reno

Casa Museo Nena

WHERE:

Via del Lavoro, 46/A - Casalecchio di Reno

REFERENCES:

museonena.it - 351 9448823
info@museonena.it

Eremo di Tizzano

WHERE:

Via Tizzano, 34 - Casalecchio di Reno



Comune di
Casalecchio
di Reno



una città
che scorre



Fondazione
Bologna
Welcome



Il paesaggio verde di Bologna

green landscape in Bologna